



General Purpose WPP678S(6V7.8Ah)

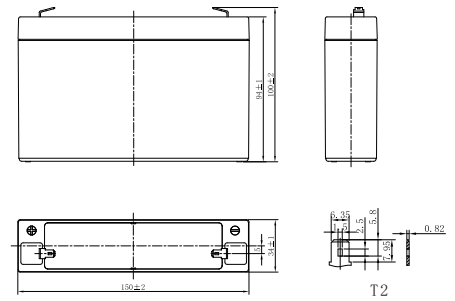


Specifications

Rated Voltage	6V	
Nominal Capacity	7.8Ah	(C ₂₀ , 1.75V/cell)
Dimension	Length	150±2mm (5.91 inches)
	Width	34±1mm (1.34 inches)
	Container Height	94±1mm (3.70 inches)
	Total Height	100±2mm (3.94 inches)
Approx Weight	1.28 Kg (2.82 lbs)	
Terminal	T2	
Container Material	ABS	
Rated Capacity (25°C)	7.80 Ah	(20hr, 0.390A, 1.75V/cell)
	7.38 Ah	(10hr, 0.738A, 1.75V/cell)
	6.85 Ah	(5hr, 1.37A, 1.75V/cell)
	6.39 Ah	(3hr, 2.13A, 1.75V/cell)
	5.80 Ah	(1hr, 5.80A, 1.60V/cell)
Max. Discharge Current	120A (5s)	
Internal Resistance (25°C)	Approx 12mΩ	
Operating Temp. Range	Discharge	-15 ~ 50°C (5 ~ 122°F)
	Charge	-20 ~ 40°C (-4 ~ 104°F)
	Storage	-15 ~ 40°C (5 ~ 104°F)
Nominal Operating Temp. Range	25±3°C (77±5°F)	
Cycle Use	Initial Charging Current less than 2.40A. Voltage 7.05V~7.35V at 25°C(77°F)Temp. Coefficient -15mV/°C	
	Initial Charging Current less than 2.40A. Voltage 6.75V~6.90V at 25°C(77°F)Temp. Coefficient -10mV/°C	
Standby Use	Initial Charging Current less than 2.40A. Voltage 6.75V~6.90V at 25°C(77°F)Temp. Coefficient -10mV/°C	
Effect of temp. to Capacity	40°C (104°F)	103%
	25°C (77°F)	100%
	0°C (32°F)	86%
Self Discharge	Batteries may be stored for up to 6 months at 25°C(77°F) and then a freshening charge is required. For higher temperatures the time interval will be shorter.	



Layout



Constant Current Discharge (Amperes) at 25 °C (77°F)

F.V/Time	5min	10min	15min	20min	30min	45min	1h	1.5h	2h	3h	4h	5h	6h	8h	10h	20h
1.85V/cell	28.7	19.7	15.0	12.2	8.96	6.48	5.25	3.78	2.92	2.06	1.60	1.33	1.12	0.881	0.721	0.381
1.80V/cell	30.8	20.8	15.8	12.7	9.24	6.65	5.38	3.86	2.97	2.09	1.63	1.35	1.14	0.894	0.731	0.386
1.75V/cell	32.5	21.7	16.3	13.0	9.48	6.80	5.48	3.93	3.03	2.13	1.65	1.37	1.15	0.904	0.738	0.390
1.70V/cell	34.0	22.6	16.9	13.4	9.72	6.95	5.59	4.00	3.07	2.16	1.67	1.39	1.16	0.913	0.745	0.393
1.67V/cell	35.2	23.2	17.3	13.7	9.89	7.06	5.67	4.05	3.11	2.18	1.69	1.40	1.17	0.921	0.751	0.396
1.60V/cell	37.4	24.2	17.9	14.1	10.2	7.24	5.80	4.13	3.17	2.22	1.72	1.42	1.19	0.934	0.760	0.401

Constant Power Discharge (Watts/cell) at 25 °C (77°F)

F.V/Time	5min	10min	15min	20min	30min	45min	1h	1.5h	2h	3h	4h	5h	6h	8h	10h	20h
1.85V/cell	54.3	37.4	28.8	23.4	17.3	12.6	10.2	7.38	5.72	4.05	3.16	2.63	2.21	1.75	1.43	0.763
1.80V/cell	57.8	39.4	30.0	24.2	17.8	12.9	10.4	7.51	5.81	4.11	3.20	2.66	2.25	1.77	1.45	0.772
1.75V/cell	60.2	40.7	30.9	24.8	18.2	13.1	10.6	7.63	5.90	4.16	3.24	2.69	2.27	1.79	1.46	0.780
1.70V/cell	62.5	42.0	31.7	25.4	18.5	13.3	10.8	7.74	5.97	4.21	3.27	2.73	2.29	1.81	1.48	0.786
1.67V/cell	64.1	43.0	32.4	25.8	18.8	13.5	10.9	7.82	6.03	4.25	3.30	2.75	2.31	1.82	1.49	0.792
1.60V/cell	66.7	44.2	33.3	26.5	19.2	13.8	11.1	7.96	6.13	4.32	3.35	2.78	2.34	1.84	1.51	0.801



General Purpose WPP678S(6V7.8Ah)



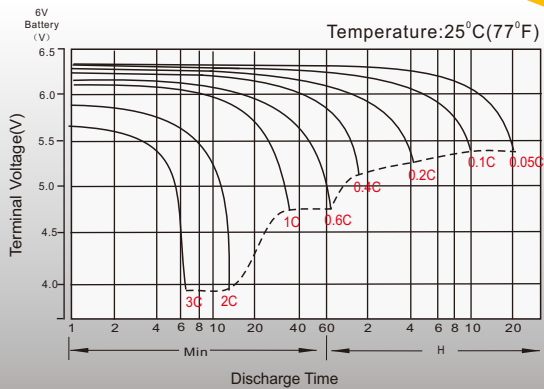
Applications

- All purpose
- Uninterruptable Power Supply (UPS)
- Electric Power System (EPS)
- Emergency backup power supply
- Alarm and security system
- Communication power supply
- DC power supply
- Auto control system

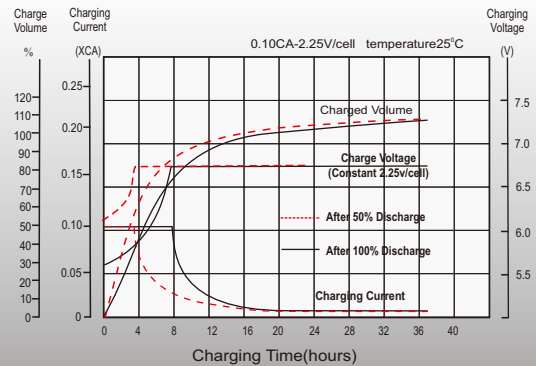
General Features

- 5 years design life(25°C)
- Special exhaust structure and sealing technology, safe and reliable, flexible installation, convenient maintenance
- PbCaSn alloy for plate grids: less gassing, less self-discharging
- High quality AGM separator: extend cycle life and prevent micro short circuit
- High purity raw material: ensure low self discharge rate

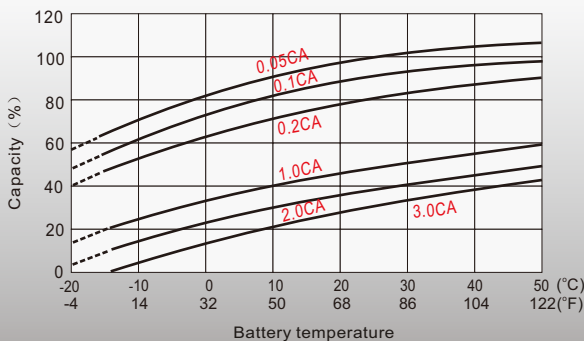
Discharge Characteristics



Float Charging Characteristics



Temperature Effects in Relation to Battery Capacity



Float Service Life

